

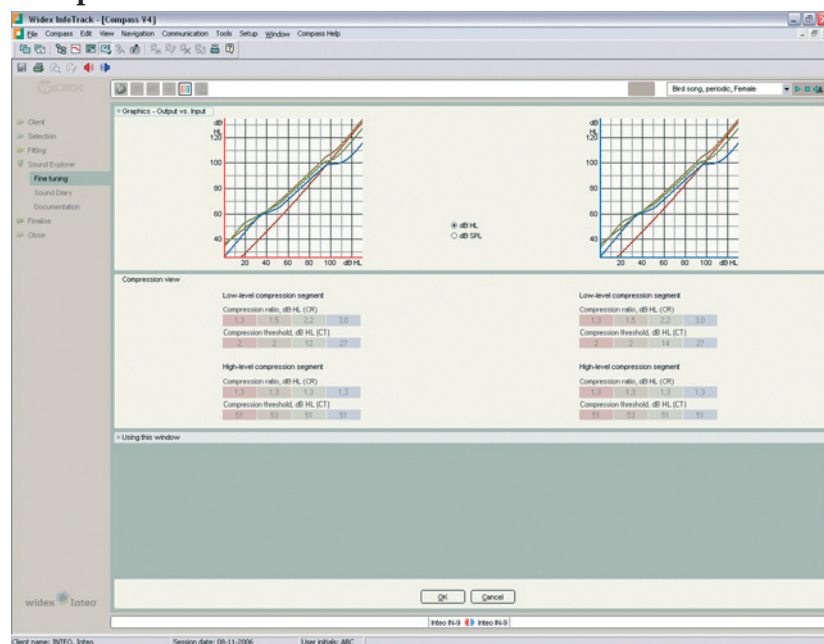
## Audiological Bulletin no. 15

Using the Compression view, the MPO manager and the Recalculate function in Inteo fittings with Compass

News from Audiological Research and Communication

This bulletin describes the Sound explorer in Compass V4. The descriptions focus on the graphic options in the different windows in the Sound Explorer section of Compass. Please refer to Compass in order to see the details of the screen. Remember that Compass offers several help functions to explain the different options in the program: Tooltips, Using this window panels and the help manual.

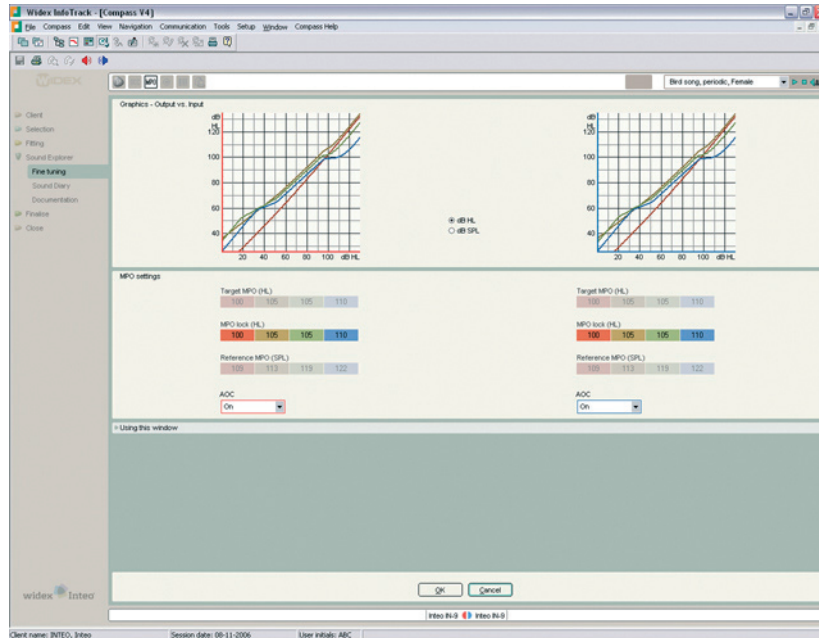
## Compression view



From the Toptool bar you can open the Compression view, which displays information about compression ratios (CR) and compression thresholds (CT) for the basic channels (500, 1000, 2000 and 4000 Hz) in the Master program. The information is divided in two tables, one for each of the two compression segments in the Inteo Input/Output function. The low-level compression segment defines the amplification for soft to moderate sounds, while the high level compression segment defines amplification for moderate to loud sounds.

When you open the Compression view, the user will be listening to the Master program.

## MPO manager

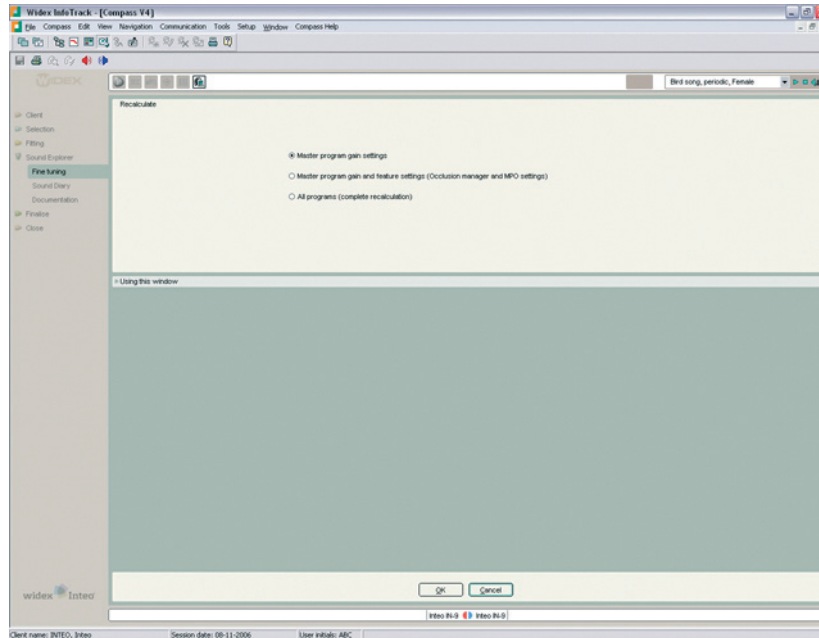


The MPO (Maximum Power Output) levels are, by default, set to ensure that very loud sounds do not cause discomfort for the individual user. If needed, these values can be adjusted using the MPO manager, which can be opened from the Toptool bar. When the MPO manager is open, you will see three rows of parameters. **Target MPO** is the prescribed MPO value and relates to the user's UCL as estimated from the Sensogram. **MPO Lock** allows you to adjust the MPO to a setting more suitable for the user. The MPO values are global values, meaning that the MPO settings in this window are valid for all listening programs. The MPO settings cannot be unlinked for the individual listening programs. The MPO settings are discrete settings for each of the basic channels in Inteo with some interchannel dependency. **Reference MPO** displays the locked MPO values in dB SPL.

Finally you can deactivate the AOC (Automatic Output Control). When the AOC is off, the compression limiting system is deactivated and the hearing aid will use peak clipping at its maximum limit.

When you work with the MPO manager, the user will be listening to the Master program and any adjustments you make will affect all programs in the hearing aid.

## Recalculate



During fine tuning it can be useful to be able to return to the initial fitting starting point – that is, the program in its default setting without any fine tuning. This can easily be achieved by using the Recalculate function, which can be opened from the Toptool bar.

If you open the Recalculate function from the Master program, you will be given three choices. **Recalculate Master program gain settings**; note that unless you have chosen to unlink one or more of the additional listening programs, this will affect gain settings in all programs. **Recalculate Master program gain and feature settings**; this will affect the feature settings in the Master program as well as in the Telecoil and DAI programs if they are linked to the Master program. **Recalculate all programs**; this will reset gain and feature settings in all programs to default values.

If you open the Recalculate function from a program other than the Master program, you will be able to reset gain and feature settings for this program in isolation.