

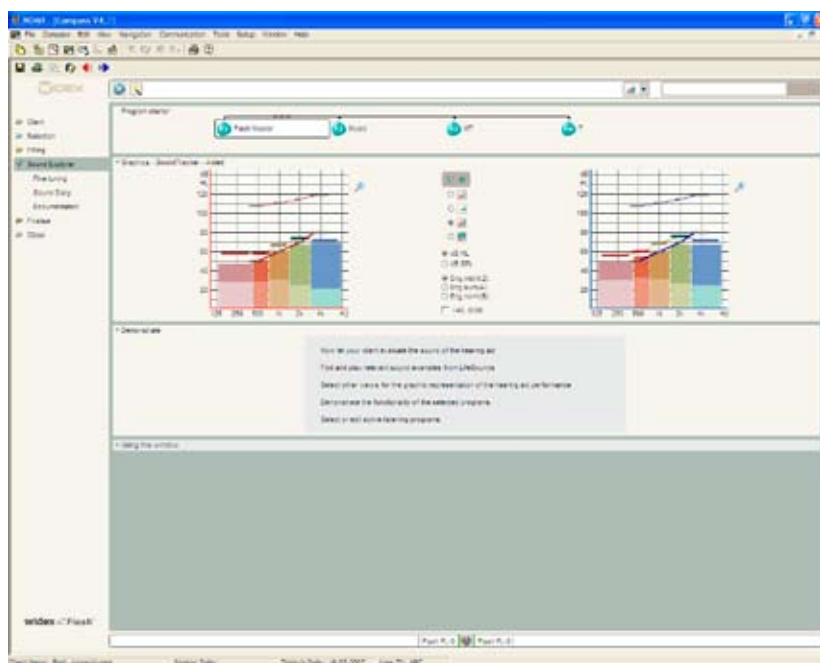
Audiological Bulletin no. 37

Using the Sound Explorer graphics to investigate the potential in Flash signal processing

News from Audiological Research and Communication

The fitting procedures for the ISP hearing aids (Inteo, AIKIA and Flash) in Compass are similar to each other. If you have already fitted AIKIA and Inteo, you will recognise the steps and procedure in the fitting of Flash. This bulletin describes the Sound explorer in Compass V4.2. The descriptions focus on the graphic options in the different windows in the Sound Explorer section of Compass. Please refer to Compass in order to see the details of the screen. Remember that Compass offers several help functions to explain the different options in the program: Tooltips, Using this window panels and the help manual.

The Sound Explorer allows the user and hearing care professional to explore the sound processing capability of Flash. The Sound Explorer includes tools for visual and auditory evaluation and demonstration of the individual fitting, as well as for adjustment of the sound processing schemes in the hearing aid.



The Sound Explorer tools

In the Sound Explorer window you have access to three basic tools – performance graphics with SoundTracker, LifeSounds MicroPlayer and the Program starter, which used in combination can be a powerful instrument in the follow-up process. The three tools are useful when evaluating the user's subjective perception of the initial hearing aid fitting, when demonstrating the effect of further adjustments and when explaining recommended situational usage to the hearing aid user.

The Graphics panel

The Graphics panel displays dynamic and static views of the hearing aid's performance for the individual fitting. By default, the SoundTracker is activated, showing the real-time hearing aid performance for the immediate sound environment. Four different SoundTracker views are available, each presenting the hearing aid's performance from a different perspective. **The aided view** is active by default. SoundTracker offers three alternative views: **the unaided input view**, which clearly shows the fast dynamics of most input signals, **the gain view**, where the slow acting compression of Flash is very evident, and **the accumulated view**, where an accumulated output spectrum as well as band specific and overall RMS levels of the output of Flash can be seen. All these views can be selected directly from the Graphics panel. If you prefer a static view, you can use the Graphics drop-down list in the Toptool bar to select one of the classic Widex performance graphs. Please be aware that all performance graphics are now available as either dB HL or dB SPL data. If no hearing aid is connected, the static graphics are available in simulated mode.

The Program starter

If you have defined more than one program in the hearing aids, you can use the Program starter panel in the upper part of the window to shift between the different programs and let the user evaluate them one by one. The listening program highlighted in the Program starter panel will be the one the user listens to, and all parameters and graphics in the window will relate to that program. The Program starter also indicates the interdependency between the different listening programs. By default, all additional programs are linked to the Master program, meaning that all fine tuning carried out in the Master program will also affect the other programs. How the programs are linked to each other is marked by a line with three small circles in the Program starter. For more information about the link features see the section "Fine tuning non-master programs".

The LifeSounds MicroPlayer

If you have the Widex LifeSounds™ module installed, you have access to a Sound Library in the Toptool bar. Use the MicroPlayer drop-down list to select sound situations, and use the play button to play the selected sound. You can choose sound examples that suit your client's lifestyle, or sound examples that are specifically targeted to the different listening programs. In this way, you can demonstrate and evaluate the different programs in realistic situations.

You can use the vertical navigation bar to open the other Sound Explorer features. Select *Fine tuning* to open the window in which you can change the settings of the individual programs and features. Select *Sound Diary* to open the window in which you can activate the short-term and long-term log and see a graphical representation of data. Select *Documentation* to open the window in which you can verify the fitting for the individual client and activate test modes.