

## Audiological Bulletin no. 40

How to fine tune non-master programs in Flash fittings

News from Audiological Research and Communication

The fitting procedures for the ISP hearing aids (Inteo, AIKIA and Flash) in Compass are similar to each other. If you have already fitted AIKIA and Inteo, you will recognise the steps and procedure in the fitting of Flash. Once additional listening programs have been added, the different programs can be activated with the Program starter while online. The user will listen to the activated program and all panels in the Compass window will relate to the program. In the Fine tuning window, fine tuning parameters for each of the programs will be available. The number and type of parameters will depend on the type of program, as described in the following.

### Linking to or unlinking from the Master program

The non-master programs in Flash are, by default, linked to the Master program. This means that all fine tuning carried out in the Master program insertion gain will automatically affect all other listening programs, making it easy to adjust amplification in all listening programs at once. The feature settings are not affected by this binding. Each listening program will always have its individual feature settings, unless you choose to change them.

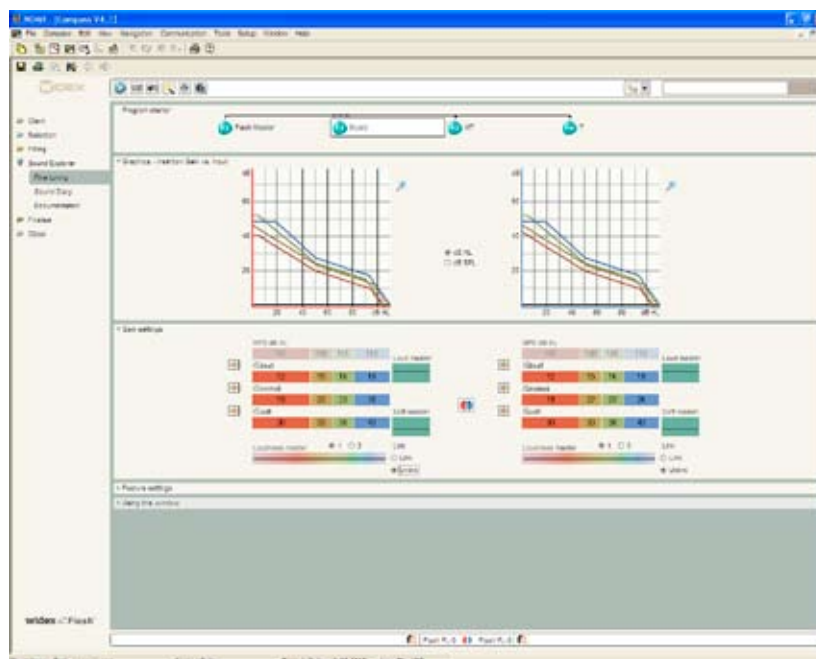
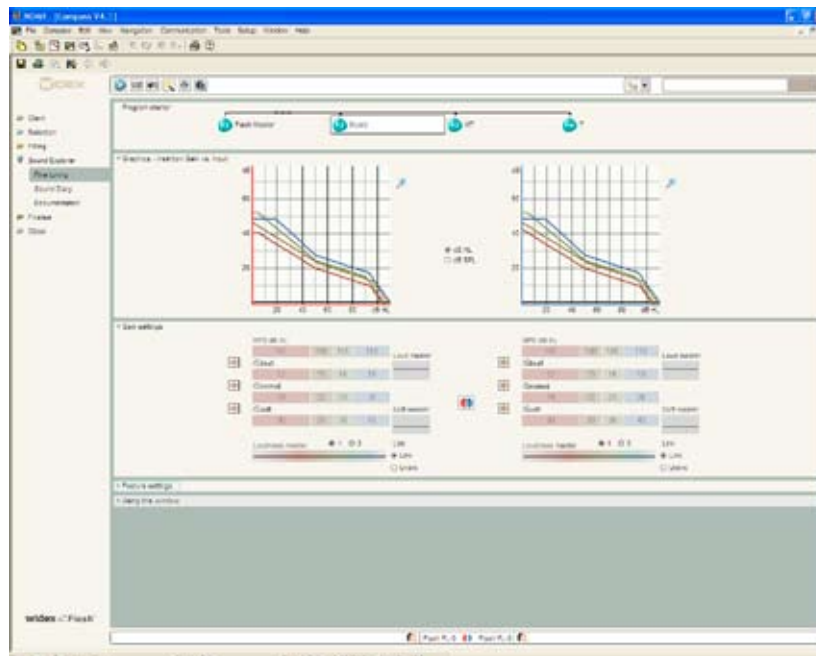
If you do not wish non-master programs to be affected by fine tuning adjustments made to the Master program, you can use the unlink function. When you choose to unlink a program, the gain setting in this program will be freed from the Master program binding and you will get access to composite fine tuning handles and insertion gain matrix, allowing further optimisation of the gain setting of the program.

The immediate link status between the Master and non-master programs is always displayed in the Program starter under the Toptool bar.

You can use the link/unlink feature if the user expresses satisfaction with one of the two programs, for example the Master program, but needs fine tuning in the Music program. Start by unlinking the Music program.

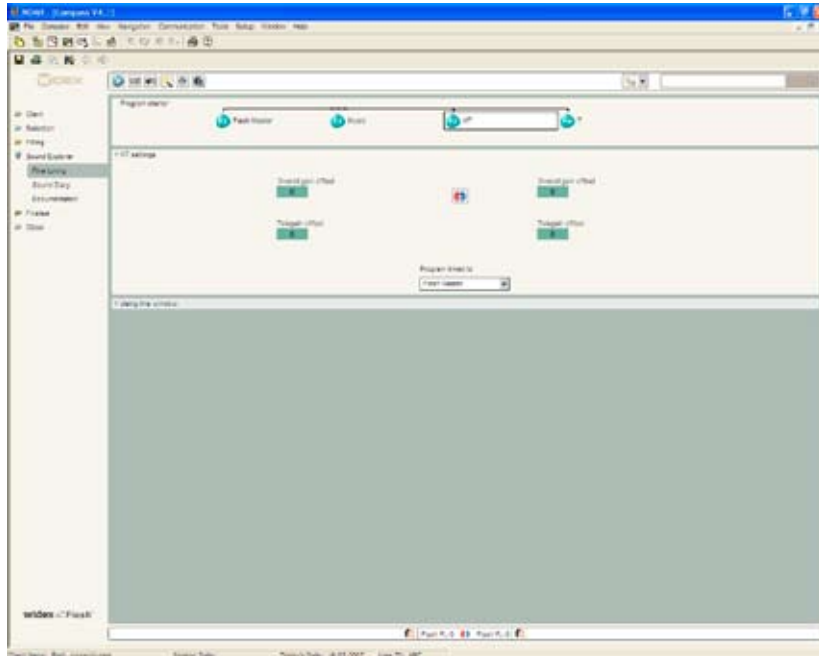
The link/unlink feature is available for the Music, TV and Acclimatisation programs. The Telecoil and DAI programs are also, by default, linked to the Master program, but you can, as an alternative, choose to link them to one of the other acoustic programs selected for your client. The Telecoil and DAI programs will adopt the entire program setup from the program they are linked to – including all gain and feature settings. In this way, if your client for example uses his or her teleloop system for listening to music, linking the T or MT program to a Music program will result in an ideal program setup for this listening situation.

## Fine tuning the acoustic programs



The Music, TV and Acclimatisation programs can be fine tuned in the same way as the Master program using composite handles and the insertion gain matrix to change the amplification provided, and adjusting the Feature settings to affect the function of some of Flash's features. By default, the gain setting is linked to the Master program and will be affected by any fine tuning applied to this. If you choose to unlink the program, it is freed from this connection and you can fine tune as desired. Please be aware that if you choose to re-link the program, it will be reset to its original setting, linked to the Master program.

## Fine tuning the telecoil programs



The M-T and T programs are, by default, linked to the Master program, and any fine tuning carried out in the Master program will automatically affect the telecoil programs.

If you wish to fine tune the settings of the telecoil programs, you have the following options:  
Use the Overall gain offset if the overall loudness level of the program is too loud or too soft. Adjustment of this feature will only affect the selected program. The initial value in this field is 0, indicating that the gain has not been fine tuned.

Use the Telegain offset if the signal from the teleloop system is too soft or too loud. Adjustment of this feature will affect the level of the telecoil input in all telecoil programs. The initial value in this field is 0, indicating that the gain has not been fine tuned.

Use the “Program linked to” drop-down list to select an alternative acoustic program to which you want to link the telecoil program. You can choose between any of the acoustic programs selected for the client. When you change the link of the telecoil program, it will adopt the settings of this acoustic program, including any fine tuning settings in this particular acoustic program.