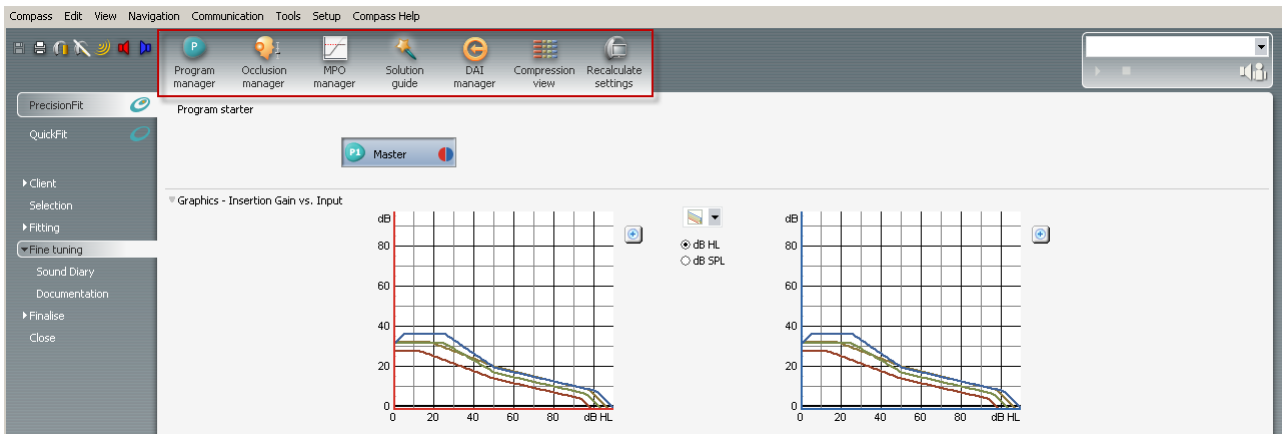


QUICK GUIDE

- HOW TO USE THE TOOLS IN THE TOPTOOL BAR

This quick guide describes how to use the tools in the Toptool bar in the Fine Tuning window.



In the top tool bar in Fine tuning, tools for adjusting the sound and settings of the hearing aid are found. The available tools are Program manager, Occlusion manager, MPO manager, Solution guide, DAI manager, Compression view, and Recalculate settings.



In the Program manager you can add, delete or change the order of programs in the hearing aid.



If your client's own voice problems are due to amplification, the problem may be solved with the Occlusion manager. The Occlusion manager is active in the lower frequency channels, and does not affect the amplification or audibility in the higher frequencies.



The MPO manager changes the maximum power output of the hearing aid. This can be helpful if the client has a restricted dynamic range.



In the Solution guide you can find solutions to the most general complaints about the sound in the hearing aid.



The Direct Audio Input (DAI) manager lets you define the settings of the M-DAI and DAI programs. These programs are automatically activated instead of the defined listening programs if you mount an audio shoe on the hearing aid.



In the Compression view, the compression threshold and compression ratio data for the two different compression segments in the hearing aid is shown, that is, low-level compression and high-level compression.



The Recalculate tool recalculates the hearing aid settings based on information from the client's audiogram and the measurements made in connection with the fitting.



When you fit a ClearBand model, you will also have access to the ClearBand tool, which allows you direct control over the highest frequencies for all inputs at once.