

DEX™

A WIRELESS WORLD

USER INSTRUCTIONS
RC-DEX

Remote control for
Widex tinnitus devices

WIDEX®
HIGH DEFINITION HEARING

SYMBOLS

The following symbols will be used throughout the manual:




Messages with this heading indicate adverse reactions, potential safety hazards and inadequate performance of device.



Messages with this heading indicate/include information regarding any special care to be exercised.



 Not for general waste.

CONTENTS

SYMBOLS	2
YOUR NEW DEX™ REMOTE CONTROL	4
Intended use	4
Description of device	5
Front view	5
Rear view	6
ACCESSORIES	7
THE BATTERY	8
Changing the battery	9
USING THE REMOTE CONTROL	11
Operating range	11
Light-emitting diode	11
Adjusting the volume	11
To mute the tinnitus devices	11
Changing programs	12
CARING FOR YOUR REMOTE CONTROL	13
WARNINGS	15
IN CASE OF MALFUNCTION	17
REGULATORY INFORMATION	19

YOUR NEW DEX™ REMOTE CONTROL

We hope you will be pleased with your Widex remote control. These user instructions explain how your remote control should be operated.



WARNING

This booklet contains important information and instructions. Read this booklet carefully before you start using your remote control.

Intended use

This remote control is intended to operate the Widex tinnitus devices.

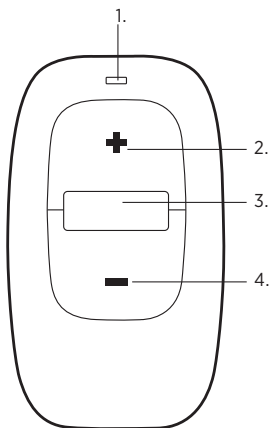
Description of device

Your tinnitus devices use a proprietary wireless technology, the WidexLink, to enable communication between the left and the right device, as well as between the devices and the RC-DEX.

The RC-DEX remote control gives simple access to functions such as volume adjustment and program change. It is also provided with a light-emitting diode (LED) for visual indication.

Front view

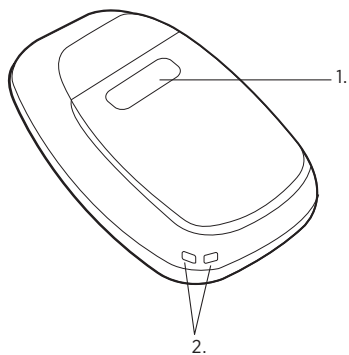
1. LED
2. Volume up
3. Program toggle
4. Volume down



Rear view

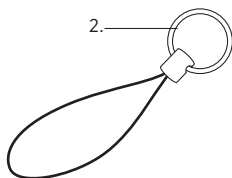
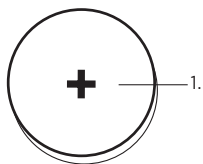
1. Battery cover

2. Eye for key ring/string attachment



ACCESSORIES

1. Battery
2. Key ring/string



THE BATTERY

The battery type for this remote control is:

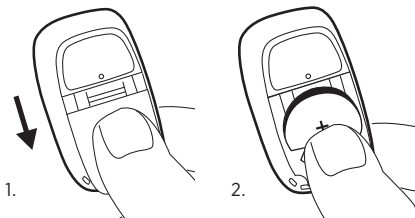
Lithium CR2032

To obtain replacement batteries, please consult your hearing care professional. Please note the expiry date and the recommendations on the battery pack regarding disposal of used batteries.

The remote control is on when a functioning battery is correctly placed in the battery compartment. Battery life is up to 12 months, depending on how often you activate the remote control keys.

Changing the battery

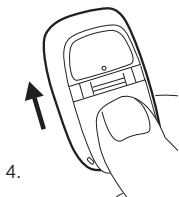
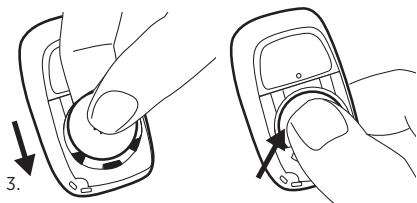
1. Slide the battery cover downwards to remove it.
2. Press the battery as illustrated to tip it up, and take it out, or just turn the device around and let the battery fall out in your hand.



NOTE

When changing battery, it is a good idea to hold the remote control over a close, soft surface.

3. Insert the new battery at an angle as illustrated and press to click the battery into place. The plus (+) sign on the battery must face upwards.
4. Replace the battery cover.



USING THE REMOTE CONTROL

The remote control is provided with an eye for attachment of a key ring or similar.

Operating range

The operating range from the remote control to the tinnitus devices is up to 1 m.

Light-emitting diode

A green light in the diode indicates that one of the keys on the remote control has been activated.

Adjusting the volume

Press the volume up key (+) briefly to raise the volume. Press the volume down key (-) briefly to lower the volume.

When you activate the volume keys, you will hear a brief beep-tone. When the maximum or minimum adjustment level is reached, you will hear a long beep-tone.

To mute the tinnitus devices

Keep pressing the volume down key on the remote control after the long beep-tone has sounded and until it stops. Pressing one of the volume keys briefly will bring back the sound.

Changing programs

Using the program key of the remote control, you can switch between the programs available in your tinnitus devices.

When you turn on your tinnitus devices, they will be in the start-up program. From this program you access the Zen program mode by a long key press (more than 1 second). Short presses on the program key will then allow you to cycle between the different Zen programs.

You return to the start-up program with a long press (more than 1 second) on the key.

Start-up program

Zen A Tones

Zen B Tones and Noise

Zen C Noise

CARING FOR YOUR REMOTE CONTROL

The remote control is a valuable object and should be treated with care. Here are some things you can do to prolong the life of your remote control:



WARNING

- Do not expose the remote control to extreme temperatures or high humidity.
- Do not immerse it in water.



CAUTION

- Clean the remote control with a soft cloth. Never wash your remote control with water, cleaning solutions or other liquids.
- Avoid dropping the remote control.



CAUTION

- It is not recommended to keep your mobile phone/PDA within close proximity of the remote control e.g. same pocket.
- Never try to open or repair the remote control yourself. (To be performed by authorised personnel only).



WARNING

Do not carry your remote control with you during X-rays, MRIs and other scans or radiation treatments and never place your remote control in a microwave oven. These are some of the types of radiation that can damage your remote control. Radiation from room surveillance equipment, burglar alarms, mobile phones and similar sources is weaker and will not damage your remote control. However, on occasion radiation from devices such as certain burglar alarms, automatic motion detectors and other electronics may cause noticeable audible interference during remote control and tinnitus device use.

WARNINGS



WARNING

Batteries can be dangerous if swallowed or used improperly. Never put a battery or tinnitus device in your mouth for any reason as you may risk swallowing it. Swallowing or improper use can result in severe injury, or even fatalities. In case of ingestion, contact your physician immediately.

- Keep your remote control and its parts, accessories and batteries out of reach of children and anyone else who might swallow such items or otherwise cause injury to themselves. Do not change batteries in front of them and do not let them see where you keep your battery supply. Discard used batteries carefully.
- Do not use your remote control on aircraft or in hospitals without permission.
- Do not use your remote control in mines or other areas with explosive gases.
- Risk of explosion if battery is replaced by an incorrect type or recharged.



CAUTION

(Risks) The use of the tinnitus devices/DEX should not interfere with other devices such as a pacemaker. However, to be extra cautious, Widex follows the guidelines recommended by the manufacturers of implantable defibrillators and pacemakers for their patients when using mobile phones. Specifically, tinnitus device wearers who also use a pacemaker should

- Keep the tinnitus devices (and/or any of the DEX accessories) at a distance of at least 15 cm away from the pacemaker and
- Do not carry the tinnitus devices (and/or any of the DEX accessories) in a shirt pocket or close to the chest.
- If any interference is observed, do not use the tinnitus devices (and/or DEX) and contact your pacemaker manufacturer and hearing care professional immediately.
- Although your remote control has been designed to comply with the most stringent international electromagnetic compatibility standards, the possibility cannot be excluded that it may cause interference with other equipment, such as medical devices.

IN CASE OF MALFUNCTION

This page includes some quick advice if your remote control fails or performs unsatisfactorily. If problems persist, contact your hearing care professional for assistance.

Problem	Possible cause	Solution
Your remote control does not work	The battery is dead or does not work	Change the battery
	The battery in your tinnitus device is exhausted	Change the battery
	Out of operating range (< 1m)	Move within operating range
	Strong electromagnetic interference	Move away from interference source
	RC-DEX and tinnitus devices not matched	Contact your hearing care professional

Problem	Possible cause	Solution
The tinnitus devices do not respond with a corresponding change in volume or program to the RC-DEX	<ul style="list-style-type: none"> a. The RC-DEX is used beyond the transmission range b. Strong electromagnetic interference in the vicinity c. The RC-DEX and the tinnitus devices are not matched 	<ul style="list-style-type: none"> a. Move the RC-DEX closer to the tinnitus devices b. Move away from known source of EM interference c. Check with hearing care professional to make sure RC-DEX is matched with tinnitus devices

REGULATORY INFORMATION

FCC ID: TTY-RCDEX

IC: 5676B-RCDEX

Federal Communications Commission Statement

This device complies with part 15 of the FCC Rules. Operation is subject to the following two conditions:

- (1) This device may not cause harmful interference, and
- (2) this device must accept any interference received, including interference that may cause undesired operation.

NOTE:

This equipment has been tested and found to comply with the limits for a Class B digital device, pursuant to part 15 of the FCC Rules. These limits are designed to provide reasonable protection against harmful interference in a residential installation. This equipment generates, uses and can radiate radio frequency energy and, if not installed and used in accordance with the instructions, may cause harmful interference to radio communications. However, there is no guarantee that interference will not occur in a particular installation. If this equipment does cause harmful interference to radio or television reception, which can be determined by turning the equipment off and on, the user is encouraged to try to correct the interference by one or more of the following measures:

- Reorient or relocate the receiving antenna.
- Increase the separation between the equipment and receiver.
- Connect the equipment into an outlet on a circuit different from that to which the receiver is connected.
- Consult the dealer or an experienced radio/TV technician for help.

NOTE:

This equipment complies with FCC radiation exposure limits set forth for an uncontrolled environment. This transmitter must not be co-located or operating in conjunction with any other antenna or transmitter.

Changes or modifications to the equipment not expressly approved by Widex could void the user's authority to operate the equipment.

Industry Canada Statement / Déclaration d'industrie Canada

Under Industry Canada regulations, this radio transmitter may only operate using an antenna of a type and maximum (or lesser) gain approved for the transmitter by Industry Canada.

To reduce potential radio interference to other users, the antenna type and its gain should be so chosen that the equivalent isotropically radiated power (e.i.r.p.) is not more than that necessary for successful communication.

This device complies with Industry Canada licence-exempt RSS standard(s). Operation is subject to the following two conditions:

- (1) this device may not cause interference, and
- (2) this device must accept any interference, including interference that may cause undesired operation of the device.

Conformément à la réglementation d'Industrie Canada, le présent émetteur radio peut fonctionner avec une antenne d'un type et d'un gain maximal (ou inférieur) approuvé pour l'émetteur par Industrie Canada.

Dans le but de réduire les risques de brouillage radioélectrique à l'intention des autres utilisateurs, il faut choisir le type d'antenne et son gain de sorte que la puissance isotrope rayonnée équivalente (p.i.r.e.) ne dépasse pas l'intensité nécessaire à l'établissement d'une communication satisfaisante.

Le présent appareil est conforme aux CNR d'Industrie Canada applicables aux appareils radio exempts de licence. L'exploitation est autorisée aux deux conditions suivantes:

- (1) l'appareil ne doit pas produire de brouillage, et
- (2) l'utilisateur de l'appareil doit accepter tout brouillage radioélectrique subi, même si le brouillage est susceptible d'en compromettre le fonctionnement.

CE 0459

Hereby, Widex A/S declares that this RC-DEX is in compliance with the essential requirements and other relevant provisions of Directive 1999/5/EC.

A copy of the Declaration of Conformity can be found at: <http://www.widex.com>.

 **N26346**



Tinnitus devices, accessories and batteries should not be disposed of with normal household waste. Please consult your national Widex distributor for advice on how to dispose of these items.



CE 0459

Manufacturer
WIDEX A/S • Nymoellevej 6, DK-3540 Lyngø
Denmark • www.widex.com



Printed by HTO / 2012-09
9 514 0237 001 #01