

WIDEX **EVOKE™**

USER INSTRUCTIONS

THE WIDEX EVOKE™ FAMILY

E-IM/E-IP model
ITE
(In-the-ear)



WIDEX®
HIGH DEFINITION HEARING

YOUR HEARING AID

(To be filled out by the hearing care professional)

- Vent No vent
 Extraction cord Volume control Push button

Your hearing aid series:

PROGRAMS

- | | |
|------------------------------------|--|
| <input type="checkbox"/> Universal | <input type="checkbox"/> Audibility Extender |
| <input type="checkbox"/> Quiet | <input type="checkbox"/> Audibility Extender |
| <input type="checkbox"/> Comfort | <input type="checkbox"/> Audibility Extender |
| <input type="checkbox"/> Transport | <input type="checkbox"/> Audibility Extender |
| <input type="checkbox"/> Urban | <input type="checkbox"/> Audibility Extender |
| <input type="checkbox"/> Impact | <input type="checkbox"/> Audibility Extender |
| <input type="checkbox"/> Party | <input type="checkbox"/> Audibility Extender |
| <input type="checkbox"/> Social | <input type="checkbox"/> Audibility Extender |
| <input type="checkbox"/> Music | <input type="checkbox"/> Audibility Extender |

SPECIAL PROGRAMS

- | | |
|------------------------------|--|
| <input type="checkbox"/> Zen | <input type="checkbox"/> Audibility Extender |
|------------------------------|--|
-

SPECIAL PROGRAMS

Phone

Audibility Extender

SMARTTOGGLE PROGRAMS

Zen+

Audibility Extender

Phone+

Audibility Extender

NOTE

The program names in the table are the default names. If you have chosen to use some of the other names available, write the new names in the table. That way you will always know which programs you have in your hearing aids.

NOTE

Read this booklet carefully before you start using your hearing aid.

NOTE

This hearing aid allows direct wireless control and sound streaming from smartphones and other devices. For more help and information contact your hearing care professional or visit: <https://global.widex.com/EVOKE>.

This hearing aid works wirelessly with the TONELINK App. We take no responsibility if the hearing aid is used with any third part App or if the TONELINK App is used with any other device.

CONTENTS

YOUR HEARING AID.....	6
Welcome.....	6
Your hearing aid at a glance.....	6
Important safety information.....	7
THE HEARING AID.....	9
Indications for use.....	9
Intended use.....	9
The battery.....	9
Low battery indication.....	10
Changing the battery.....	10
Sound signals.....	11
Lost partner	12
How to tell right from left.....	12
Turning the hearing aid on and off.....	12
Putting on and removing the hearing aid.....	13
Removing the hearing aid.....	13
Programs.....	13
The Zen program.....	16
Program and sound adjustment.....	19
PAIRING YOUR HEARING AID AND SMARTPHONE.....	22

CLEANING.....	23
Tools.....	23
Cleaning.....	23
Changing the microphone filters.....	25
The wax guard.....	27
ACCESSORIES.....	30
TROUBLESHOOTING.....	31
REGULATORY INFORMATION.....	34
Wireless radio transmission.....	36
EU directives.....	38
Directive 2014/53/EU.....	38
Information regarding disposal.....	39
FCC and ISED statements.....	39
SYMBOLS.....	43

YOUR HEARING AID

Welcome

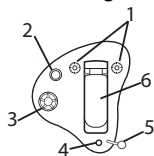
Congratulations on your new hearing aid.

Use your hearing aid regularly, even if it takes some time getting used to it. Infrequent users don't usually get the full benefit of a hearing aid.

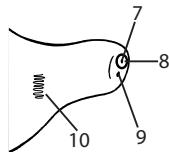
NOTE

Your hearing aid and its accessories may not look exactly as illustrated in this booklet. We also reserve the right to make any changes we consider necessary.

Your hearing aid at a glance



1. Microphone openings
2. Push button (optional)
3. Volume control (optional)
4. Vent (optional)
5. Extraction cord (optional)
6. Battery compartment



7. Sound outlet
8. Wax guard
9. Vent (optional)
10. Left/right identification. Blue indicates your left hearing aid while red is for your right hearing aid.

Important safety information

Read these pages carefully before you begin using your hearing aid.



Hearing aids and batteries can be dangerous if swallowed or used improperly. Swallowing or improper use can result in severe injury or even fatalities. In case of ingestion, contact a doctor immediately and call the 24 Hour National Button Battery Ingestion Hotline at (202) 625-3333.



Take your hearing aids out when you are not using them. This will help to ventilate the ear canal and prevent ear infections.



Contact your doctor or hearing care professional immediately if you suspect you may have an ear infection or an allergic reaction.



Contact your hearing care professional if the hearing aid doesn't feel comfortable, or if it doesn't fit properly, causing irritation, redness or the like.



Remove your hearing aids before showering, swimming or using a hair dryer.



Do not wear your hearing aids when applying perfume, spray, gels, lotion or cream.



Do not dry your hearing aid in a microwave oven - this will ruin it.



Never use other people's hearing aids and never allow others to use yours, as this could damage your hearing.



Never use your hearing aids in environments where there may be explosive gases, such as in mines, etc.



Keep hearing aids, their parts, accessories and batteries away from children and mentally disabled people.



Never try to open or repair the hearing aid yourself. Contact your hearing care professional if you need to have your hearing aid repaired.



Your hearing aids contain radio communication technology. Always observe the environment in which you are using them. If any restrictions apply, you must take precautions to comply with these.



Do not expose your hearing aids to extreme temperatures or high humidity, and dry them quickly if they get wet, or if you perspire heavily.

Your hearing aids should be stored and transported within the temperature and humidity ranges of -20°C to +55°C (-4°F to 131°F) and 10%-95% rH.

Your hearing aids are designed to operate within the temperature, humidity and atmospheric pressure ranges of 0°C (32°F) to 50°C (122°F), 10%-95% rH and 750 to 1060 mBar.

You can find technical data sheets and additional information on your hearing aids on <https://global.widex.com>.

THE HEARING AID

Indications for use

The hearing aids are indicated for individuals older than 36 months with a range of hearing loss from minimal (10 dB HL) to severe (90 dB HL) and all hearing loss configurations.

They are to be programmed by licensed hearing care professionals (audiologists, hearing aid specialists, otolaryngologists) who are trained in hearing (re)habilitation.

Intended use

The hearing aids are intended as air conduction amplification devices to be used in everyday listening environments. The hearing aids may be equipped with the Zen program, intended to provide a relaxing sound background (i.e. music/noise source) for adults who desire to listen to such a background in the quiet.

The battery

Use a **type 312 zinc-air** battery for your hearing aid.

Always use a fresh, new battery that is precisely the kind recommended by your hearing care professional.

NOTE

Check that the battery is completely clean and free of any residue before inserting it in the hearing aid. Otherwise your hearing aid may not function as expected.



Never attempt to recharge a zinc-air hearing aid battery, as it could explode.



Never leave a weak battery in the hearing aids while storing them. It could leak and ruin your hearing aid.



Dispose of used batteries as indicated on the packaging and take note of the expiry date.

Low battery indication

When the battery is weak, a sound signal will play. If the battery drains suddenly there may however be no warning. We recommend carrying a spare battery with you wherever you go.

Changing the battery

To change the battery, do as follows:



Take the adhesive tab off the new battery and make sure there is no sticky substance left on it. Let it "breathe" for 60 seconds.



Use the nail grip to gently swing the battery door open and remove the old battery. Place the new battery in the battery compartment with the "+" sign facing in the same direction as the "+" sign on the battery compartment door, as shown on the illustration.



Close the battery compartment door. If it doesn't close easily, the battery is not placed correctly. If you are not using the hearing aid for a few days, keep the battery compartment open.

NOTE

Avoid dropping your hearing aid - hold the hearing aid above a soft surface while changing the battery.

Sound signals

Your hearing aid plays sounds to inform you that certain features have been activated or that you have changed program. These sounds can be spoken messages or tones.

Ask your hearing care professional to turn these sounds off if you don't need them.

Lost partner

(Only available in selected models)

Your hearing care professional can turn on a feature in your hearing aid that warns you whenever it loses contact with the hearing aid in the opposite ear. You will hear a spoken message in your ear.

How to tell right from left

The hearing aid for your right ear has a red mark. The hearing aid for your left ear has a blue mark.

Turning the hearing aid on and off



To turn the hearing aid on, close the battery door. The hearing aid will play a sound signal to indicate that it is on, unless your hearing care professional has deactivated this function.

Open the battery door to turn the hearing aid off.

NOTE

You can also cup the hearing aid in your hand to verify that it is turned on. If it's on, it will whistle. Don't forget to turn off the hearing aid when it is not in use.

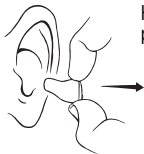
Putting on and removing the hearing aid



Close the battery lid completely. Hold the hearing aid with your thumb and forefinger and insert it slowly into your ear until you feel resistance.

Then use the tip of your forefinger to gently push the hearing aid into your ear until it feels comfortable. Pulling the outer ear upwards and backwards while you insert the hearing aid can be helpful.

Removing the hearing aid



Hold the hearing aid with your thumb and forefinger and pull carefully.

NOTE

If you find it difficult to take out the hearing aid, move it carefully from side to side.

Programs

PROGRAMS	USE
Universal	For everyday use

PROGRAMS	USE
Quiet	Special program for listening in quiet environments
Comfort	Special program for listening in noisy environments
Transport	For listening in situations with noise from cars, trains, etc.
Impact	Use this program if you prefer a clear and sharp sound
Urban	For listening in situations with changing sound levels (in supermarkets, noisy workplaces or similar)
Party	For listening in situations with many people talking at the same time
Social	Use this program if you are in small social gatherings, such as family dinners
Music	For listening to music
SPECIAL PROGRAMS	USE
Zen	Plays tones or noise for a relaxing sound background

SPECIAL PROGRAMS**USE**

Phone

This program is designed for listening to phone conversations

SMARTTOGGLE PROGRAMS**USE**

Zen+

This program is similar to Zen but allows you to listen to different types of tones or noise

Phone+

This program lets you listen to the phone and avoid the surrounding sounds. One of your hearing aids transmits the phone conversation to the other, so that you can listen with both ears

NOTE

The names in the list of programs are the default names. Your hearing care professional can also select an alternative program name from a preselected list. Then it is even easier for you to select the right program in each listening situation.

NOTE

You can only have one SmartToggle program in your hearing aid. Depending on your hearing loss, your hearing care professional can activate the Audibility Extender feature. Ask your hearing care professional if you could benefit from this. If your needs and preferences change over time, your hearing care professional can easily change your program selection.

The Zen program

Your hearing aid may be provided with a unique optional listening program called Zen. It makes musical tones (and sometimes a rushing noise) in the background using the latest Fractal technology. These sounds are shaped according to your hearing loss so you can listen to them at any time and at any place with a simple push of the program button. The Zen program may be used alone (without amplification) in quiet when you are not required to hear surrounding sounds. Or, it may be used with amplification so that both the surrounding sounds and the generated sounds (fractal tones and noise) are heard together.



CAUTION

Use of the different Zen programs may interfere with hearing surrounding sounds including speech. The programs should not be used when hearing such sounds is important. Switch the hearing aid to a non-Zen program in those situations.

The duration of the Zen play time can be set by your hearing healthcare professional according to your needs.

Benefits

The Zen program may provide a relaxing listening background for some people. When the Zen program is used in a tinnitus management program, its wearer may experience some relief from tinnitus.

Indications for use

The Zen program is intended to provide a relaxing sound background for adults (21 years and older) who desire to listen to such a background in quiet. It may be used as a sound therapy tool in a tinnitus treatment program that is programmed by a licensed hearing healthcare professional (audiologists, hearing aid specialists, otolaryngologists) who is trained in tinnitus management.

Directions for use

The Zen program can be activated with a simple push of the program button on the hearing aid (or on the remote control). Depending on how your hearing care professional has set up the program, you can access the Zen program by a "short-press" of the program button or a "long-press" of the program button.

- "Short-press" option - the program button is pressed for less than a second. At most two listening programs can be programmed for Zen.
- "Long-press" option - the program button is pressed and held for more than 1 second. Up to three Zen styles are available. A "short-press" of the program button in the long-press mode will allow you to cycle through the available Zen styles. You can exit the "long-press" mode by pressing and holding the program button for more than one second.

Because of the unique ways in which Zen is programmed in your hearing aid, please follow the recommendations of your hearing care professionals as to how to use the program, when to use the program and/ or how long to use the program.

Precautions

To ensure the safety and effectiveness of the Zen program when used as a sound therapy tool for tinnitus, the tinnitus management program must be designed and conducted by hearing care professionals who are trained in tinnitus management. A tinnitus management program should include a complete audiological evaluation, tinnitus diagnosis, counseling, use of proper amplification and/or sound therapy tools.

Prior to any tinnitus management program, it is advisable that you seek medical attention to exhaust any medical or surgical treatment options.

Use your hearing aid and the Zen program according to the directions and schedule recommended by your hearing care professionals.

Contraindications

The following symptoms are contraindicated for the use of hearing aids. Including the Zen program

- Congenital or traumatic deformity of the ear
- Active drainage from the ear within 90 days
- History of rapid progressive hearing loss within previous 90 days
- Acute or chronic dizziness
- Sudden unilateral hearing loss in previous 90 days

Warnings

Use of the Zen program may interfere with hearing everyday sounds including speech. It should not be used when hearing such sounds is important. Switch the hearing aid to a non-Zen program in those situations.

Risks

There are no known risks or side effects associated with the use of the Zen program. However, consistent with our recommendations on the use of conventional hearing aids, stop using the hearing aids (and the Zen program) and seek attention from your hearing care professional if any of the following symptoms are noted:

- Skin irritation
- Perceived decrease in loudness, tolerance of sounds, speech not as clear, or worsening tinnitus

Program and sound adjustment

Adjusting the sound level using the volume control

Your hearing aid adjusts the sound level automatically according to your sound environment, but you can also adjust it manually depending on your needs and preferences. To do so, turn the volume control towards the front to increase the volume and turn it towards the rear to reduce it.

Each time you operate the volume control, you will hear a beep-tone unless your hearing care professional has deactivated this function. When you reach the maximum or minimum setting, you will hear a steady tone.

NOTE

Your hearing aid will also play a tone when you reach the default sound level programmed for you by your hearing care professional. In this way you can easily return to the optimal setting for most listening situations.

You can also mute your hearing aid if you need to. Do as follows:

- Keep turning the volume control towards the rear until you can hear the steady sound

To turn the sound on again:

- Turn the volume control towards the front **or**
- Change program

Any adjustment of the volume will be cancelled when you turn off your hearing aid or if you change program.

Using the push button to change programs and adjust the sound level:

If you have two hearing aids, the push button can be programmed in several ways:

As a dedicated program button:

To change programs, just tap the button. To access and exit SmartToggle programs, push and hold the push button down for more than one second (this setting is optional). Once you have accessed the SmartToggle program, you can change among the different Zen styles selected for you by short taps on the button.

As a dedicated sound adjustment button:

Tap the button on your hearing aid if you'd like more audibility and more volume. If you need to decrease the volume or you'd like more comfort, tap the button on your hearing aid.

A long push on either of your hearing aids will mute and unmute the sound (this setting is optional).

As a combined program and sound adjustment button:

If you have this option, tap the button on your hearing aid if you'd like more audibility and more volume. If you need to decrease the volume or if you'd like more comfort, just tap the button on your hearing aid. A long push on either of your hearing aids will change programs.

If you only have one hearing aid, a short tap will change programs and a long tap will allow you to access the SmartToggle programs.

NOTE

You can also use your app for changing programs and adjusting the sound in your hearing aids.

PAIRING YOUR HEARING AID AND SMARTPHONE

To pair your hearing aids and smartphone you need to restart your hearing aid. Do as follows:

1. Restart your hearing aids by opening and closing the battery compartment.
2. Keep the hearing aids close to your phone and follow the instructions on your phone.
3. The hearing aids and smartphone are now ready to use.

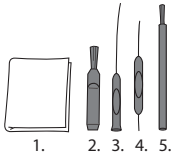
NOTE

Your hearing aids are only in pairing mode for three minutes after you restart them. You might need to restart them again if you didn't pair them in time.

CLEANING

Tools

You will receive the following cleaning tools with your hearing aid:



1. Cloth
2. Brush
3. Long wax-removing tool
4. Short wax-removing tool
5. Battery magnet

Cleaning

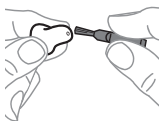
Cleaning your hearing aid every day will make it more efficient and more comfortable to wear.

The hearing aid



Wipe it with a soft cloth (for example the cloth you received from your hearing care professional).

The sound outlet



Remove any visible earwax from **around** the sound outlet with the small brush or cloth. **Never** try to clean the wax guard.

NOTE

If you cannot clean the sound outlet, contact your hearing care professional. **Never** insert anything into the sound outlet as this can ruin your hearing aid.

The vent

Clean the vent every day by passing the long wax removing tool (no. 4) all the way through the vent. When you are done, leave the hearing aid open to ventilate it.

NOTE

It is important for the performance of your hearing aid that you keep the vent clean and free of earwax, dirt and the like. Clean it every day after use and consult your hearing care professional if the vent is blocked.

Dry your hearing aid quickly if it gets wet, or if you perspire heavily. Some people use a special dehumidifier like Widex PerfectDry Lux to help keep their hearing aids dry and clean. Ask your hearing care professional if this is right for you.



Do not use any kind of liquid or disinfectant to clean your hearing aid.



Clean and inspect your hearing aid every day after use to check that it is not broken. If the hearing aid breaks while you are wearing it, leaving small fragments in your ear canal, contact your doctor. Never try to take out the fragments yourself.

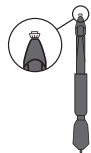
Changing the microphone filters



The microphone filters help to protect the hearing aid microphones against dirt and earwax. Always use microphone filters supplied by Widex with your hearing aid.



Open the case as illustrated.



The microphone filter tool consists of the following parts:

1. Removal hook
2. New microphone filter



Insert the removal hook into the used filter.



Keep the holder at a right angle.



Pull the used filter straight out.



Insert the new filter into the microphone opening.



Pull the holder straight out while turning it slightly to make sure the filter remains in place.



Ask your hearing care professional about how often you should change the microphone filters.



The filters are for one-time use only and are not intended to be cleaned.



If the filter fits loosely, discard it and use a new one.

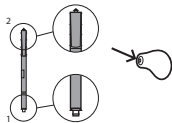
The wax guard

The wax guard helps to protect the hearing aid against earwax. Always use wax guards supplied by Widex with your hearing aid.

Changing the wax guard

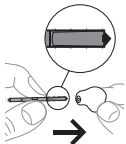


Open the wax guard case as illustrated.

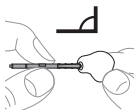


The wax guard consists of the following parts:

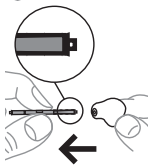
1. Removal hook
2. New wax guard



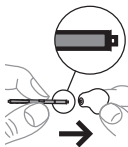
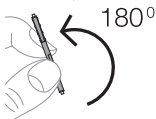
Insert the removal hook into the used wax guard.



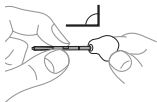
Keep the holder at a right angle.



Pull the used wax guard straight out.



Insert the new wax guard into the opening of the sound outlet and press it gently.



Pull the holder straight out.



Ask your hearing care professional about how often you should change the wax guard.



The wax guard is for one-time use only and is not intended to be cleaned.



If the wax guard fits loosely, discard it and use a new one.



If the wax guard falls off inside your ear, contact your doctor or hearing care professional to have it removed. Do NOT attempt to remove the wax guard yourself.

ACCESSORIES

You can use a variety of accessories with your hearing aid. To see whether you could benefit from using these accessories, ask your hearing care professional.

Name	Use
RC-DEX	remote control
TV-DEX	for listening to TV and audio
PHONE-DEX 2	for easy landline use
FM+DEX	for streaming audio and FM signals
UNI-DEX	for connecting hearing aids to mobile phones
CALL-DEX	for easy wireless connection to mobile phones
COM-DEX	for wireless connection to mobile phones and other devices via Bluetooth
COM-DEX Remote Mic	for helping hearing aid users hear speech in difficult listening situations

Available in some countries only.

TROUBLESHOOTING

These pages contain advice on what to do if your hearing aid stops working or if it doesn't work as expected. If the problem persists, contact your hearing care professional.

Problem	Possible cause	Solution
The hearing aid is completely silent	It is not turned on	Make sure the battery is placed correctly and the battery compartment cover is closed correctly.
	The battery does not work	Insert a new battery in the hearing aid
	The sound outlet is blocked	See the cleaning section
	The microphone opening is blocked	See the cleaning section
The hearing aid volume is not powerful enough	The sound outlet is blocked	See the cleaning section
	Your ear is blocked by earwax	Contact your doctor
	Your hearing may have changed	Contact your hearing care professional/doctor

Problem	Possible cause	Solution
The hearing aid whistles continuously	Your ear is blocked by earwax	Contact your doctor
	It is not correctly placed in your ear canal	Take it out and reinsert it
	It fits loosely in your ear canal	Contact your hearing care professional
The hearing aid is uncomfortable to wear	It is not correctly placed in your ear canal.	Consult your hearing care professional
	It does not fit your ear properly	Contact your hearing care professional
	Your outer ear or ear canal is sore	It is important that first-time users only wear the hearing aid for short periods of time at the beginning. Take 2-3 weeks to gradually get used to the hearing aid. If the soreness continues, contact your hearing care professional

Problem	Possible cause	Solution
Your hearing aids are not working in synchrony	The connection between the hearing aids is lost	Turn them off and on again
The hearing aids do not respond with a corresponding change in volume or program to the device	<ul style="list-style-type: none"> a. The device is used beyond the transmission range b. Strong electromagnetic interference in the vicinity c. The device and the hearing aids are not matched 	<ul style="list-style-type: none"> a. Move the device closer to the hearing aids b. Move away from known source of EM interference c. Check with your hearing care professional to make sure device is matched with the hearing aids
You hear “interrupted” speech (on and off) from the hearing aids or no speech (muted) from the opposite hearing aid.	<ul style="list-style-type: none"> a. The battery in one of the hearing aids has expired b. Strong electromagnetic interference in the vicinity 	<ul style="list-style-type: none"> a. Replace battery in one or both hearing aids b. Move away from known source of EM interference

REGULATORY INFORMATION

Warning to hearing aid dispensers

A hearing aid dispenser should advise a prospective hearing aid user to consult promptly with a licensed physician (preferably an ear specialist) before dispensing a hearing aid if the hearing aid dispenser determines through inquiry, actual observation, or review of any other available information concerning the prospective user, that the prospective user has any of the following conditions:

- (i) Visible congenital or traumatic deformity of the ear.
- (ii) History of active drainage from the ear within the previous 90 days.
- (iii) History of sudden or rapidly progressive hearing loss within the previous 90 days.
- (iv) Acute or chronic dizziness.
- (v) Unilateral hearing loss of sudden or recent onset within the previous 90 days.
- (vi) Audiometric air-bone gap equal to or greater than 15 decibels at 500 hertz (Hz), 1,000 Hz, and 2,000 Hz.
- (vii) Visible evidence of significant cerumen accumulation or a foreign body in the ear canal.
- (viii) Pain or discomfort in the ear.

Special care should be exercised in selecting and fitting a hearing aid whose maximum sound pressure level exceeds 132 decibels because there may be risk of impairing the remaining hearing of the hearing aid user.

Important notice for prospective hearing aid users

Good health practice requires that a person with a hearing loss have a medical evaluation by a licensed physician (preferably a physician who specializes in diseases of the ear) before purchasing a hearing aid. Licensed physicians who specialize in diseases of the ear are often referred to as otolaryngologists, otologists, or otorhinolaryngologists. The purpose of medical evaluation is to assure that all medically treatable conditions that may affect hearing are identified and treated before the hearing aid is purchased. Following the medical evaluation, the physician will give you a written statement that states that your hearing loss has been medically evaluated and that you may be considered a candidate for a hearing aid. The physician will refer you to an audiologist or a hearing aid dispenser, as appropriate, for a hearing aid evaluation.

The audiologist or hearing aid dispenser will conduct a hearing aid evaluation to assess your ability to hear with and without a hearing aid. The hearing aid evaluation will enable the audiologist or dispenser to select and fit a hearing aid to your individual needs.

If you have reservations about your ability to adapt to amplification, you should inquire about the availability of a trial-rental or purchase-option program. Many hearing aid dispensers now offer programs that permit you to wear a hearing aid for a period of time for a nominal fee after which you may decide if you want to purchase the hearing aid.

Federal law restricts the sale of hearing aids to those individuals who have obtained a medical evaluation from a licensed physician. Federal law permits a fully informed adult to sign a waiver statement declining the medical

evaluation for religious or personal beliefs that preclude consultation with a physician. The exercise of such a waiver is not in your best health interest and its use is strongly discouraged.

Children with hearing loss

In addition to seeing a physician for a medical evaluation, a child with a hearing loss should be directed to an audiologist for evaluation and rehabilitation since hearing loss may cause problems in language development and the educational and social growth of a child. An audiologist is qualified by training and experience to assist in the evaluation and rehabilitation of a child with a hearing loss.

Wireless radio transmission

Wireless functions and operating characteristics

The following tables summarizes the technical details of the wireless technology:

Technical details	Hearing aid Inductive radio
Antenna type	Integral coil antenna
Antenna dimensions	Ø 2 mm, L 5 mm
Modulation	FSK
Magnetic field strength	-54 dB μ A/m @ 10 m
Output power (EIRP)	-
Range	0.3 m

Technical details	Hearing aid Inductive radio
Center frequency	10.6 MHz
Channel	Single Channel
Bandwith	660 kHz
Data rate	212 kbps
Data flow	Simplex/Semi duplex
Protocol	Random Access / Proprietary

Wireless security measures

Security of the wireless signals is assured through device system design that includes:

- Individual MAC address for each unit which is checked during each transmission.
- A built-in pairing table which specifies valid and legitimate pairing among units
- A proprietary Widex communication protocol which checks the package numbers during each transmission.
- A Cyclic Redundancy Check (CRC) to check data validity and correct errors.

Electromagnetic emissions/immunity standards

The product complies with the following EMC/EMI standards:

Standard	Test type	Note
47 CFR Part 15, Subpart B	RF emissions	US FCC requirements for unintentional radiators
47 CFR Part 15, Subpart C	RF emissions	US FCC requirements for intentional radiators
IEC 60601-1-2	General EMC including RF emissions, RF immunity, ESD	Medical Electrical Equipment, Electromagnetic compatibility
IEC 60118-13	RF immunity	International standard for hearing instruments to ensure adequate immunity radio interference from mobile telephones

EU directives

Directive 2014/53/EU

Hereby, Widex A/S declares that this E-IM/E-IP is in compliance with the essential requirements and other relevant provisions of Directive 2014/53/EU.

The E-IM/E-IP contains a radio transmitter operating at 10.6 MHz, -54 dB μ A/m @10 m.

A copy of the Declaration of Conformity according to 2014/53/EU can be found at:

<https://global.widex.com/doc>



Information regarding disposal

Do not dispose of hearing aids, hearing aid accessories and batteries with ordinary household waste.

Hearing aids, batteries and hearing aid accessories should be disposed of at sites intended for waste electrical and electronic equipment, or given to your hearing care professional for safe disposal.

FCC and ISED statements

FCC ID: TTY-UI

IC: 5676B-UI

Hardware Version Identification Number (HVIN): E-IP L, E-IP R, E-IM L, E-IM R

Federal Communications Commission Statement

This device complies with part 15 of the FCC Rules. Operation is subject to the following two conditions:

- (1) This device may not cause harmful interference, and
- (2) this device must accept any interference received, including interference that may cause undesired operation.

NOTE:

This equipment has been tested and found to comply with the limits for a Class B digital device, pursuant to part 15 of the FCC Rules. These limits are designed to provide reasonable protection against harmful interference in a residential installation. This equipment generates, uses and can radiate radio frequency energy and, if not installed and used in accordance with the instructions, may cause harmful interference to radio communications. However, there is no guarantee that interference will not occur in a particular installation. If this equipment does cause harmful interference to radio or television reception, which can be determined by turning the equipment off and on, the user is encouraged to try to correct the interference by one or more of the following measures:

- Reorient or relocate the receiving antenna.
- Increase the separation between the equipment and receiver.
- Connect the equipment into an outlet on a circuit different from that to which the receiver is connected.
- Consult the dealer or an experienced radio/TV technician for help.

NOTE:

This equipment complies with FCC radiation exposure limits set forth for an uncontrolled environment. This transmitter must not be co-located or operating in conjunction with any other antenna or transmitter.

Changes or modifications to the equipment not expressly approved by Wi-dex could void the user's authority to operate the equipment.

ISED Statement / Déclaration d'ISED

This device contains licence-exempt transmitter(s)/receiver(s) that comply with Innovation, Science and Economic Development Canada's licence-exempt RSS(s). Operation is subject to the following two conditions:

- (1) This device may not cause interference.
- (2) This device must accept any interference, including interference that may cause undesired operation of the device.

L'émetteur/recepteur exempt de licence contenu dans le présent appareil est conforme aux CNR d'Innovation, Sciences et Développement économique Canada applicables aux appareils radio exempts de licence. L'exploitation est autorisée aux deux conditions suivantes:

- (1) L'appareil ne doit pas produire de brouillage;
- (2) L'appareil doit accepter tout brouillage radioélectrique subi, même si le brouillage est susceptible d'en compromettre le fonctionnement.

ISED RADIATION EXPOSURE STATEMENT:

This equipment complies with ISED RF radiation exposure limits set forth for an uncontrolled environment. This transmitter must not be co-located or operating in conjunction with any other antenna or transmitter.

ISED EXPOSITION AUX RADIATIONS:

Cet équipement est conforme avec ISED les limites d'exposition aux rayonnements définies pour un contrôle environnement. Cet émetteur ne doit pas être co-localisés ou fonctionner en conjonction avec une autre antenne ou émetteur.

SYMBOLS

Symbols commonly used by WIDEX A/S in medical device labelling (labels/IFU/etc.)

Symbol	Title/Description
--------	-------------------

**Manufacturer**

The product is produced by the manufacturer whose name and address are stated next to the symbol. If appropriate, the date of manufacture may also be stated.

**Catalogue number**

The product's catalogue (item) number.

**Consult instructions for use**

The user instructions contain important cautionary information (warnings/precautions) and must be read before using the product.

**Warning**

Text marked with a warning symbol must be read before using the product.

**WEEE mark**

“Not for general waste”. When a product is to be discarded, it must be sent to a designated collection point for recycling and recovering to prevent the risk of harm to the environment or human health as a result of the presence of hazardous substances.

Symbol Title/Description



CE mark

The product is in conformity with the requirements set out in European CE marking directives.



RCM mark

The product complies with electrical safety, EMC and radio spectrum regulatory requirements for products supplied to the Australian or New Zealand markets.



Widex A/S

Nymoellevvej 6, DK-3540 Lynge, Denmark
<https://global.widex.com>

CE 0459

Manual no.:
9 514 0427 041 #02
CIB number:
CIB393
Issue: 2019-11

